



**Aptos History Museum**

# Aptos Historian

**Fall 2014 - Volume #2 - Issue #3**

## Inside this issue:

1. Loma Prieta Earthquake
2. Then & Now Revealed
3. Hula for History Recap, New Acquisitions
4. Then & Now Contest

## What's New?

*Editor-in-Chief:*  
Nicholas Laschkewitsch  
(NicsCorner.com)

*Desktop Publishing and  
Overall Design:*  
Nicholas Laschkewitsch

*Contributors:*  
John Hibble,  
Kevin Newhouse

*Assistant Editors:*  
John Hibble, Jennifer  
Davis & Kevin Newhouse

## Remembering the Loma Prieta Earthquake



Damage across from the Bayview Hotel - Photo: Aptos History Museum

October 17, 2014 marked the 25-year anniversary of the 1989 Loma Prieta earthquake, which measured 6.9 on the Richter scale and lasted approximately 15 seconds. It was centered on a section of the San Andreas Fault near Loma Prieta Peak... hence the namesake. Loma Prieta translates to “Dark Mountain” and is the highest point in the Santa Cruz Mountains. The quake became known worldwide as the “Bay Area Earthquake,” but the epicenter was actually located in the Forest of Nisene Marks State Park, just a few miles up from Aptos Village.

It was 5:04 pm when the ground started to shake. Game 3 of the World Series between the San Francisco Giants and the Oakland A’s was set to begin at 5:35 pm. Millions of people were tuned in to watch the pre-game festivities at Candlestick Park when the earthquake hit. It was the first time ever a major earthquake in the United States was broadcast live by television.

63 people died as a result of the 1989 quake, six being Santa Cruz County residents. There was an estimated \$6 billion in property damage. The Highway One Bridge over Harkins Slough in Watsonville collapsed. Downtown Santa Cruz suffered most of the county’s major structural damage.

A historic piece of Aptos Village was also lost as a result of the Loma Prieta earthquake. A block-long portion of the historic village located across from the Bay View Hotel was red-tagged by the county as it was left teetering on damaged piers over the Aptos Creek Ravine. At first it appeared the businesses might be saved with a bit of repairs and at the very worst, the buildings would be demolished and rebuilt.

(continued on page 2)

(continued from page 1)

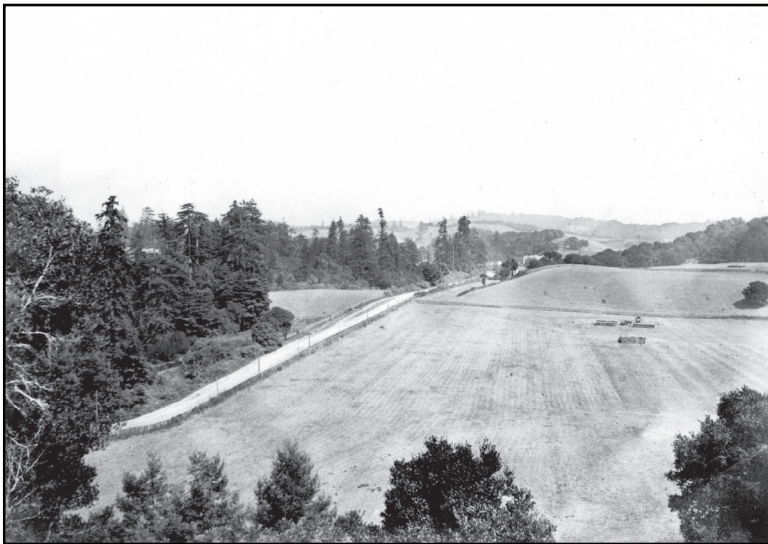
However, on November 8, 1989, one of the buildings that had been sitting atop damaged piers collapsed into the deep ravine of Aptos Creek. The Montad furniture store was one of the businesses lost. The Colonial Barber Shop, which was originally the first telephone exchange in Aptos, was also lost in the tumble.

Not long after geologists determined that the epicenter was in The Forrest of Nisene Marks, a small unofficial sign appeared in the general vicinity of the coordinates given. Ranger Jerry Waggoner later replaced it with a hand painted sign, which has since been replaced by the official sign that stands there today. However, because the epicenter is approximately 11 ½ miles below the earth's surface, it is nearly impossible to mark the exact location.

*-Kevin Newhouse*

## Last Issue's Then & Now Contest

Nobody was able to guess the present-day location of last issue's mystery photo. See below for the answer!



### Aptos Coast Road 1889

The Coast Road (as seen in the photo above) is present day Soquel Drive. Highway One cuts through the field in this photo. The hill in the upper right is where Deer Park shopping center is located today.

If you look carefully where the hill and the road intersect you can see the roof of Claus Spreckels' mansion.

## Did you know?

- **1920's:** Rio Del Mar Beach becomes notorious unloading point for bootleg liquor.
- **1989:** Magnitude 7.1 Loma Prieta Earthquake strikes the Bay Area on October 17. The 25th anniversary of this earthquake occurred on October 17, 2014.

## JOIN US TODAY!

Call (831) 688-1467,  
or visit [www.AptosHistory.org](http://www.AptosHistory.org) to  
download a membership form!



## Hula for History - Our 2014 Night to Rally Fundraiser

On Friday, August 8th, 2014 at Seascapes Sports Club from 5:30 pm - 8:00 pm we held our Hula for History Museum Fundraiser. The evening was filled with Hawaiian music on the pool deck, delicious food from local restaurants, fine wines and beer. Did we mention professional tennis from the Comerica Bank Challenger with world ranked players?

Thanks to our many donors, auction items ranged from gift certificates, a signed hockey puck, to a 3-day stay at a cabin in Twain Harte. The bidding was continued into the evening and, in the end, the auction items brought in nearly \$5,000 for the Aptos History Museum. We'd like to sincerely thank all of our donors. Also, a huge thanks to the Seascapes Sports Club for hosting our 2014 installment. Until next year!

*-Nicholas Laschkewitsch*



*Photos by Nicholas Laschkewitsch*



## New Acquisitions

We continue to receive wonderful historic photographs. "Krazy George" Henderson is America's only professional cheerleader. He is credited with inventing the "human wave" on October 15, 1981 at an Oakland A's game. And in the late 1980s, he was a familiar face right here in Aptos. He owned a sports bar named "Krazy's Restaurant & Bar" which is today occupied by Burger. The Santa Cruz Sentinel recently ran a story about Krazy George and his new book, "Still Crazy After all these Cheers".

The Aptos History Museum decided to check in with Krazy George and, after a nice conversation, he agreed to send us a copy of his book as well as some photos which will soon be on display.

## Then & Now - Contest Time!

Where was this photo taken? Be the FIRST to guess the current-day location of this photo and you will win a renewal of your museum membership **OR** a framed photo!



Email your guesses to:

[AptosHistory@yahoo.com](mailto:AptosHistory@yahoo.com)

We will reveal the answer in the next issue!

To our supporters - THANK YOU!



  
**Aptos History Museum**  
7605-B Old Dominion Ct.  
Aptos, CA 95003  
[www.AptosHistory.org](http://www.AptosHistory.org)  
(831) 688-1467



Just search for *Aptos History Museum*!